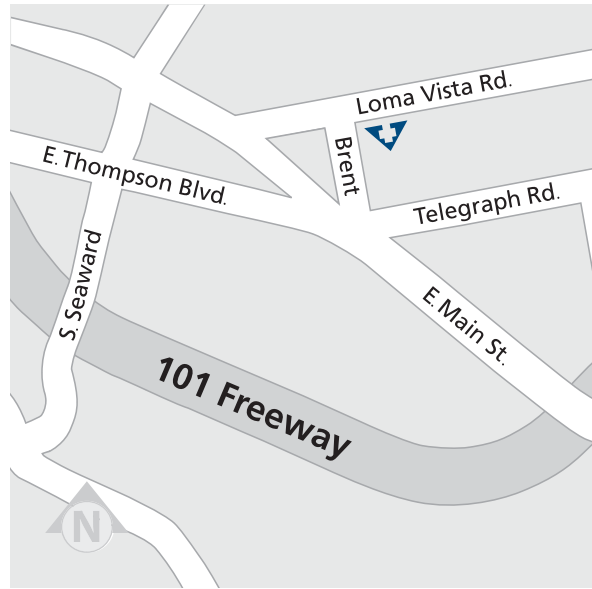


About 40% of women have dense breast tissue.

For these women, mammograms alone may not be enough to find breast cancer.



The Breast Center

805/948-5093
168 N. Brent St., Suite 401
Ventura, CA 93003

cmhshealth.org/breastcenter



Community Memorial Health System

147 N. Brent St., Ventura, CA 93003
805/948-5011
cmhshealth.org



ALL BREASTS ARE NOT THE SAME

EARLY DETECTION OF BREAST CANCER SAVES LIVES



Community Memorial Health System

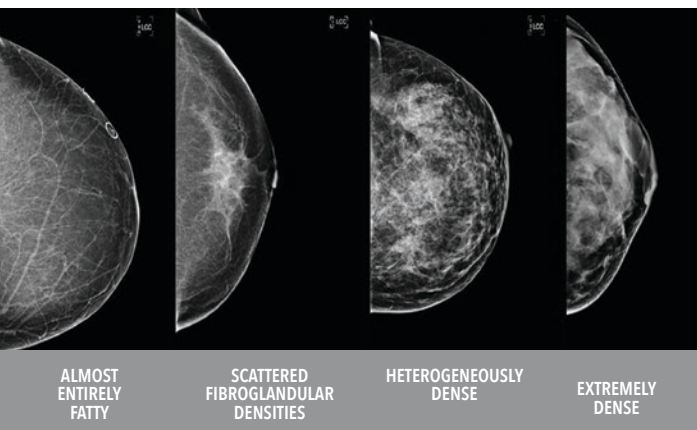
All Breasts Are Not the Same

SOME ARE FATTY, SOME ARE DENSE, AND SOME ARE A MIX.

Breast density – what does it mean?

Breasts consist of fat and breast tissue. Some women have more fat than breast tissue. Others have more breast tissue than fat; their breasts are considered dense. On a mammogram, dense tissue looks white. Since masses or lumps also appear white on a mammogram, a suspicious lump may be masked by the dense breast tissue.

Dense breast tissue is also linked with an increase in the risk of developing breast cancer. Women with extremely dense breast tissue have a four to six times greater risk of developing breast cancer than women who do not have dense breast tissue.¹ Invenia ABUS helps physicians look differently at dense breast tissue.



Breast density is determined by the radiologist who reads your mammogram and classifies the density into one of four categories. Your doctor will tell you if you have dense breasts based on your mammogram's classification on the density scale.

¹ Boyd et al., New England Journal of Medicine 2007;356:227-36 "Women with dense tissue in 75% or more of the breast have a risk of breast cancer four to six times as great as the risk among women with little or no dense tissue."

LOOK DIFFERENTLY

INVENIA™ ABUS – THE ONLY BREAST-CANCER SCREENING TECHNOLOGY FDA-APPROVED FOR DETECTION IN WOMEN WITH DENSE BREAST TISSUE.

Should I have an Invenia ABUS screening exam?

Invenia ABUS breast cancer screening was developed specifically to help doctors find cancers hidden in dense breast tissue, which may be missed by mammography.

If you have dense breast tissue, like 40 percent of women in the United States, the addition of ABUS (Automated Breast Ultrasound) screening can increase the detection of cancers. Invenia ABUS screening along with your screening mammogram will help provide a clear evaluation of your dense breast tissue.

What's the Invenia ABUS screening experience like?

From the moment you lie down on the exam table, you'll realize that Invenia ABUS screening is completely unlike a mammogram. A layer of lotion is applied, and then a scanner is firmly positioned on your breast to acquire the images. The exam takes approximately 15 minutes and provides your doctor with clear 3-D ultrasound images. The physician will review the ABUS screening images along with your mammogram.

How is the Invenia ABUS exam different?

Unlike 2-D or 3-D mammography, which uses radiation, Invenia ABUS screening uses sound waves to create 3-D pictures of the breast tissue. Invenia ABUS is the only FDA-approved system for breast-cancer screening when used in combination with mammography in women who have dense breast tissue and no prior interventions.

Ask your doctor if an Invenia ABUS screening would benefit you.

